



## Year 3 Spring 1

### Writing

Use of quality texts to inspire and model writing both fiction and non-fiction.

- Begin to use **inverted commas** to punctuate speech
- Begin to understand the purpose of **paragraphs**
- Use conjunctions to create longer more complex **sentences**
- Plan and write using a variety of genres including diary entries, non-fiction texts, character studies and descriptions
- Know and use more complex sentence structures including fronted adverbials with correct punctuation
- **Spelling patterns:** short I spelt y, adding suffixes to words with more than one syllable, prefix mis and dis, words with k spelt ch

### Reading

- Individual reading and interventions as necessary
- Guided Reading in class – Old Possums Book of Practical Cats by T.S. Elliot

### P.E.

- Tennis
- Fitness

### Art

Famous Buildings

- Light and dark shading
- Patterns and symmetry in buildings
- Design a building

### SCIENCE

#### How Plants Grow

- making systematic and careful observations and, where appropriate, taking accurate measurements using standard units, using a range of equipment, including thermometers and data loggers
- gathering, recording, classifying and presenting data in a variety of ways to help in answering questions
- recording findings using simple scientific language, drawings, labelled diagrams, keys, bar charts, and tables
- reporting on findings from enquiries, including oral and written explanations, displays or presentations of results and conclusions
- using results to draw simple conclusions, make predictions for new values, suggest improvements and raise further questions
- identifying differences, similarities or changes related to simple scientific ideas and processes
- using straightforward scientific evidence to answer questions or to support their findings
- identify and describe the functions of different parts of flowering plants: roots, stem/trunk, leaves and flowers
- explore the requirements of plants for life and growth (air, light, water, nutrients from soil, and room to grow) and how they vary from plant to plant
- investigate the way in which water is transported within plants
- explore the part that flowers play in the life cycle of flowering plants, including pollination, seed formation and seed dispersal

### GEOGRAPHY

#### Our European Neighbours

- Name different countries in Europe.
- Name the seas and oceans surrounding Europe.
- Compare the human and physical geography of London and Paris
- Ask and answer questions to help me compare and contrast London and Paris.
- Identify European countries based on human features, such as language, flag and currency.
- Identify the capital cities of Europe.
- Compare two European capital cities according to their human and physical Features.
- Use independent research to explore the human and physical features of a particular European country.
- Locate the countries of Europe, including Russia, on a map of Europe.
- Locate the capital cities of Europe on a map.

### French

- Food Glorious Food!
- Names of foods and how to say that you like or dislike them

### Trips/Visits

North West Surrey Synagogue visit or visitors.

### RE

#### JUDAISM: What are important times for Jewish people?

- link features of Jewish celebrations with stories, beliefs or objects give examples of special times or special words for Jewish people

### MATHS

#### Multiplication

- Multiply a 2 digit number by a one digit number using formal written methods
- Link Multiplication and division
- Divide a 2 digit number by a 1 digit number using partitioning and moving to more formal written method.
- Understanding remainders when dividing
- Scaling

#### Length and Perimeter

- Measure in m and cm
- Measure in mm
- Finding equivalent lengths (m – cm and cm to mm)
- Comparing lengths
- Adding lengths

### PSHE

#### Dreams and Goals

Difficult challenges and achieving success

- Dreams and Goals
- My dreams and ambitions
- A New Challenge
- Our New Challenge
- Overcoming Obstacles
- Celebrating Learning

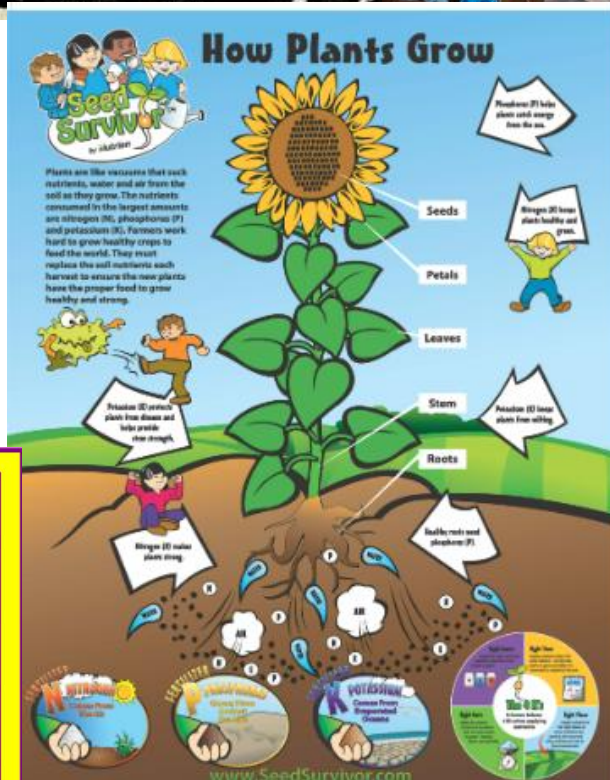
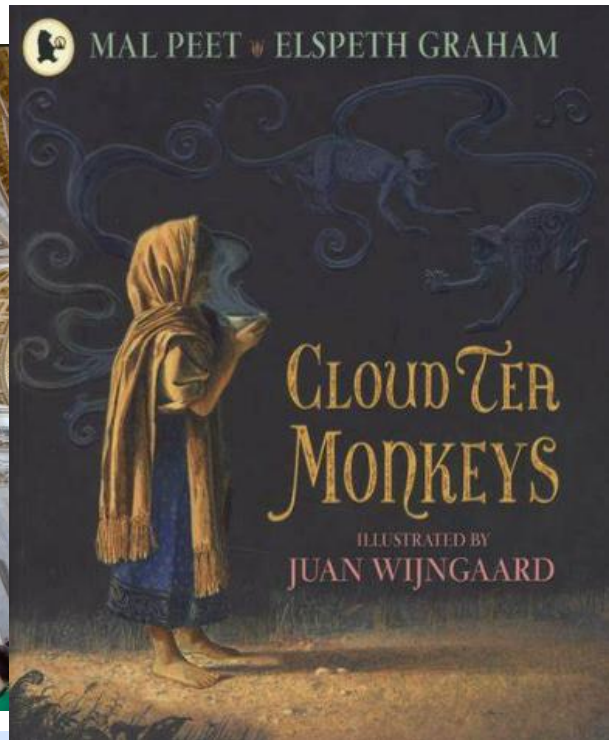
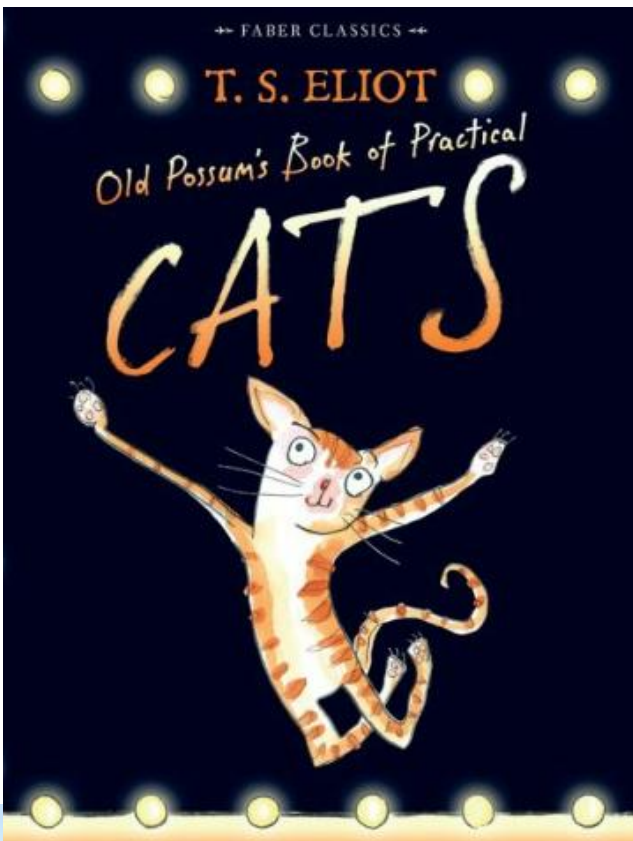
### MUSIC

#### Three Little Birds – Reggae

- Listen and sing back
- Play and improvise

### COMPUTING

- **Spreadsheets** – creating bar graphs and pie charts, Cell addresses, the formula bar, Using 2Calculate,



## What is Perimeter?

The perimeter is the distance all the way around the outside of a 2D shape.