

Welcome to our project newsletter about the works taking place at Meadowcroft Primary School. We will continue to publish regular newsletters throughout the project to provide progress updates & inform you of movements in & around the construction site.

### What's the project about?

Neilcott have been appointed to carry out the construction of a new school building to increase Meadowcroft School's capacity, becoming 1FE all through the school (120 additional places - 210 pupils at full capacity). Works include:

- Refurbishment of the existing building (including fire upgrades)
- An extension to the existing building
- Construction of MUGA and new landscaping and surfacing to the external of the school.
- S278 Highway upgrade works external to the site demise, along Little Green Lane to improve safety and site access.

### What's been happening so far?

Since our previous update, we have delivered the following:

- Attenuation tank and associated drainage completed
- MUGA pitch and landscaping nearing completion
- Completed piling, including helical piling for the new build

### What's happening next?

The following works will be progressed in the coming months:

- Handover of MUGA pitch back to the school for additional recreation space
- Drainage and foundation works for the new teaching block, including excavation, reinforcement installation and continuation of foul and surface water drainage



MEET THE TEAM



Jonathan Hawkins  
Senior Site Manager

E: [jhawkins@neilcott.co.uk](mailto:jhawkins@neilcott.co.uk)  
T: 07584 156164



Jake Dudding  
Quantity Surveyor

E: [jdudding@neilcott.co.uk](mailto:jdudding@neilcott.co.uk)  
T: 07773 113659



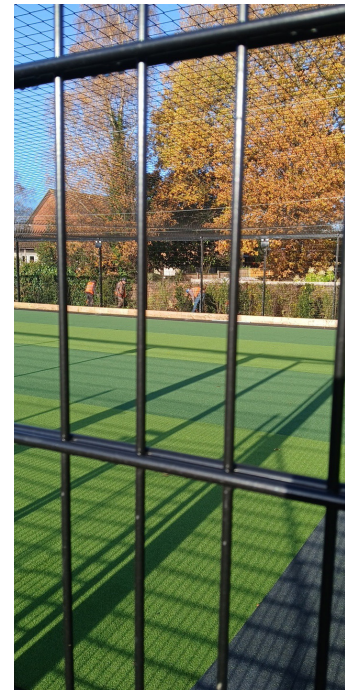
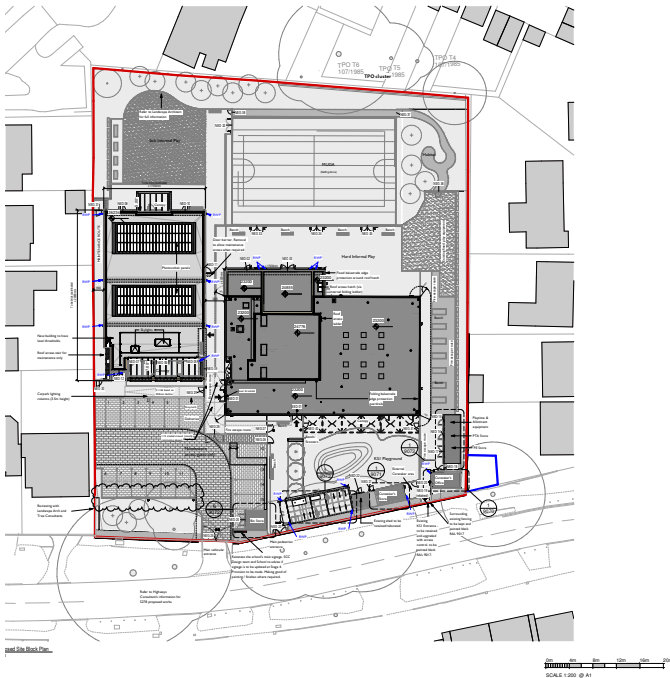
Mike Cunningham  
Contracts Manager

E: [mcunningham@neilcott.co.uk](mailto:mcunningham@neilcott.co.uk)  
T: 07949 512595



Kawsar Abdi  
Social Value Manager

E: [kawsar.abdi@neilcott.co.uk](mailto:kawsar.abdi@neilcott.co.uk)  
T: 074715 99071



## How we're working with the community

Five educational workshops are to be delivered during development of Meadowcroft Primary School, including

- 'Spot the Hazard' site tour
- Build Challenge
- Building Materials and Properties
- Exploring Sustainability
- Construction Careers

Workshops to be scheduled in due course for students to get involved with as the project progresses.

## How we're constructing sustainably

In line with our project requirements and commitments, we will ensure to embed sustainability into every stage of construction, from design and procurement through to delivery on site. This means selecting low-carbon materials, managing waste responsibly, reducing energy use, and protecting the local biodiversity of the area.

## Seasons Greetings

We would like to wish you all a Merry Christmas & a Happy New Year, and thank you for all of your patience & co-operation during the works. We look forward to making great progress in 2026.

Please note, the site will be closed from 24th December, reopening on 02 January 2026.

CONSIDERATE  
CONSTRUCTORS

Our site is registered with the Considerate Constructors Scheme. It is monitored by an experienced industry professional to assess our performance against the Code of Considerate Practice, which aims to reduce the impact from construction on the local community.

For any complaints or comments regarding our site activities which you do not want to contact our site team about, please contact the scheme's administration office on 0800 7831423. Alternatively, please visit the scheme's website [www.ccscheme.org.uk](http://www.ccscheme.org.uk)

We always strive to keep the impact of our work on those living and working around us to a minimum. As a neighbour, we would really like to get your views to help us improve how we operate. A few moments of your time completing the hand-delivered CCS Good Neighbour Questionnaire would be very much appreciated.

REGISTERED  
SITE

CONSIDERATE  
CONSTRUCTORS  
SCHEME

